



STYLE BOOK

These pictures are strictly confidential and cannot be used for any other purpose than showing our reputation

VETRENERIE di EMPOLI



Griffe
MONTENAPOLEONE
MILANO

Griffe Montenapoleone – Milano®
is a brand of Vetriere di Empoli

gira e rigira



In competition for the
«Compasso d'Oro» 2020

**Gira e Rigira
arricchito con
cristalli Swarovski**

**Gira e Rigira
enriched with
Swarovski crystals**



OLIMPIA

Tribute to Olympic Games
Milano Cortina d'Ampezzo 2026





MARMO



AQUA





DOLCE VITA



CAPRICCIO ORO



CAPRICCIO PLATINO



ARLECCHINO



SABAUDIA



IKEBANA®



ROMA



LOVE SHADOW GOLD



LOVE SHADOW PLATINE



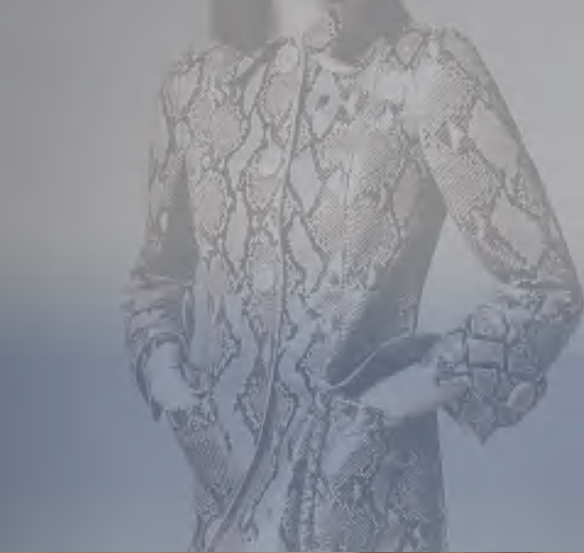
REGINE PLATINUM



PIZZO BIANCO



REGINE TRASPARENTE



TEMPTATION GOLD



BLACK CROCODILE



TARTARUGA



GOLDEN TIGER



COQUILLE ST. GEORGES



REGINE D'OR



JARDIN DE PAUL

Fresco by Giulio Romano
Palazzo Te, Mantua, 1524-1534 A.D.



ARA PACIS, Rome, 9 B.C.



POMPADOUR - CURLING ACANTUS-TYPE



COLOUR AND GOLD



CLEAR AND PLATINUM



CLEAR AND GOLD



ANTICO