

FRANCESCO BALZANO  
×  
GIOBAGNARA

JANUARY 2023 — UPDATE









## GIORGIO BAGNARA, FOUNDER AND CEO OF GIOBAGNARA

Born into a family renowned for cultivating for three generations the art of living, Giorgio Bagnara became passionate about his calling at a very early age. In the late Nineties, after noticing that leather from the fashion industry was not considered enough as material for home accessories, he founded GIOBAGNARA with the goal of applying it to a complete collection. Along with his wife, Vanessa, he decided to move his design studios and workshops in the old docks of the Port of Genoa where, surrounded by the essence and beauty of that location, the company took a significant step forward.

## GIOBAGNARA

A brand that is distinctive for elegantly designed creations that express luxury without ostentation, available in an uncommon and virtually limitless color palette of leathers and suede, and crafted to the highest standards using both traditional know-how and leading-edge technology. This approach to tradition and modernity led Giorgio Bagnara to experiment: he constantly pushes technical limits in his quest for objects that are both beautiful and relevant, and in doing so relies on the skills of the company's craftspeople. Very quickly, GIOBAGNARA became renowned for its expertise, and its founder became a partner of choice for a large number of interior decorators and yacht and jet designers who called upon his know-how for special commissions. In 2015, Giorgio Bagnara expanded its leather portfolio with the acquisition of the saddle leather specialist Rabitti 1969. Today, nearly two decades after its founding, GIOBAGNARA has one of the most comprehensive offers of leather home accessories on the market and is preparing to open a fresh chapter in its history.



## FRANCESCO BALZANO

Francesco Balzano was born and grew up in Paris, yet his visual culture is imprinted with the images of Venice, Florence, Rome and Capri – where he used to spend his summer holidays. He studied interior design and architecture, and then joined the famed studio of Joseph Dirand, working on prestigious projects. In 2018, he opened his own studio and started designing custom and limited editions of furniture pieces for art and design galleries all over the world, whilst continuing his work as interior architect for private clients.

Simplicity as a means to ultimate sophistication. The unparalleled mix of noble materials, pure lines and essential functions of everyday lifestyle. The singularity of each design conceived as a sort of monolithic, sculptural piece that stands the test of time. “My work is architectural and authentic; – says Francesco – it is a permanent tribute to the beauty of timeless things”.



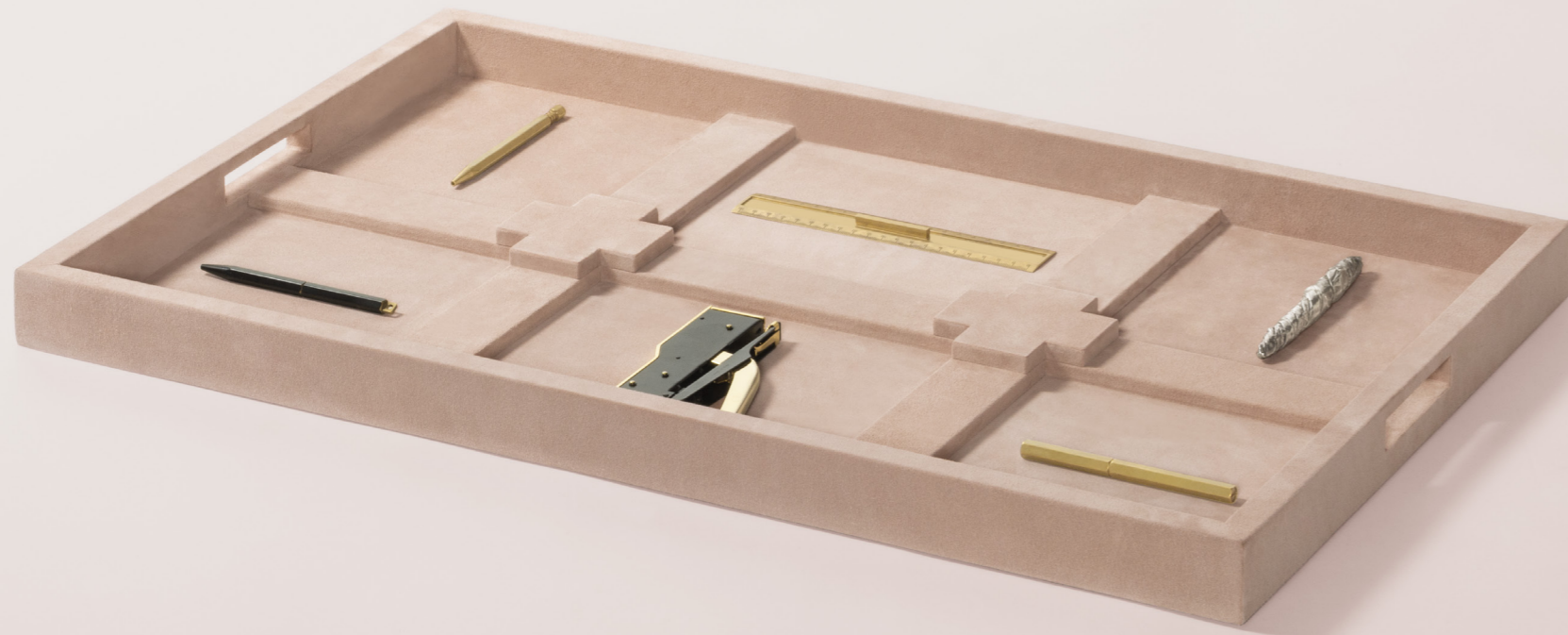
**ASSOLUTO  
COLLECTION**

Assoluto is collection born from the orthogonal intersection of rigorously geometrical volumes. As a homage to the work of Carlo Scarpa, the massive forms and sharp edges create pleasing contrasts with the soft, natural charm of leather, and an eye-catching interplay of light and shadow, while the strong, clean lines provide each creation with a bold and unique visual aesthetics.





ASSOLUTO  
TRAY



FBTV040  
*cm 80.5 x 50.5 | h. cm 5.5*

Leather-covered wood  
structure.

Custom sizes available on  
request.







ASSOLUTO  
STOOL

FBHS088  
cm 35.5 x 35.5 | h. cm 51

Leather-covered wood  
structure.

Custom sizes available on  
request.



ASSOLUTO  
BENCH



FBHS086  
cm 200.5 x 40.5 | h. cm 46

Leather-covered wood  
structure.  
Provided with two push-pull  
drawers.

Custom sizes available on  
request.









ASSOLUTO  
PLINTH

FBHA075  
cm 35.5 x 35.5 | h. cm 81

Leather-covered wood  
structure.

Custom sizes available on  
request.







ASSOLUTO  
CONSOLE

FBMC089  
cm 120.5 x 35.5 | h. cm 91

Leather-covered wood  
structure.

Custom sizes available  
on request.







ASSOLUTO  
COFFEE TABLE



FBMT098  
cm 150.5 x 60.5 | h. cm 31

Leather-covered wood  
structure.

Custom sizes available on  
request.



## OSSICLE COLLECTION

Ossicle is a collection that comprises monolithic seats, benches and tables crafted with a carefully selected range of leather and marble colors and finishes.

Their monumental volumes originate from both primal monolithic and contemporary minimal features entwined, while the lines are a reference to the "Jeu des Osselets", which has roots dating back to ancient Greece and Rome, reinterpreting it according to a modern visual and a sharp humour, creating the perfect balance between organic and pure geometric shapes.







**OSSICLE  
WALL  
LAMP**

triple — FBLW710  
*cm 40.5 x 13 | h. cm 39.5*  
*light bulb E27 100 W*

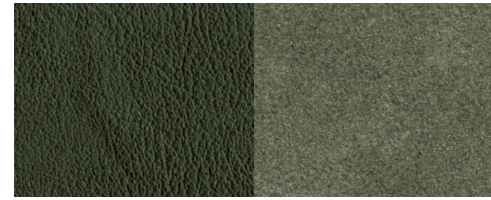
Custom sizes available  
on request.



FINISHES



## THE DESIGNER'S RECOMMENDED COMBINATIONS



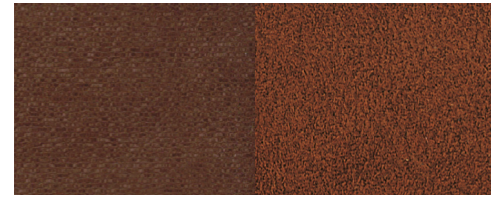
F02 loden green + A02 loden green



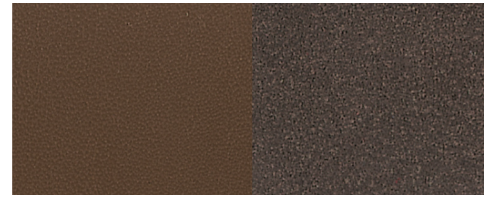
F95 off white + A05 white



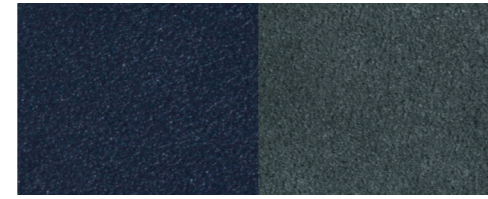
F06 ivory + A06 ivory



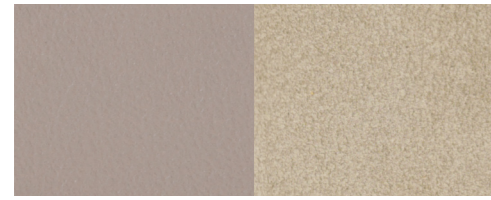
F82 rust + A08 siena



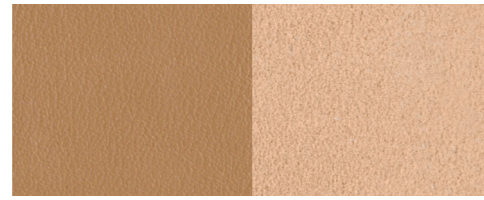
F96 clay + A21 mud



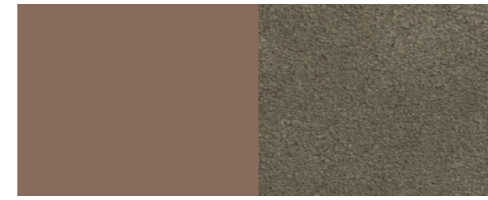
F33 ocean + A31 petrol blue



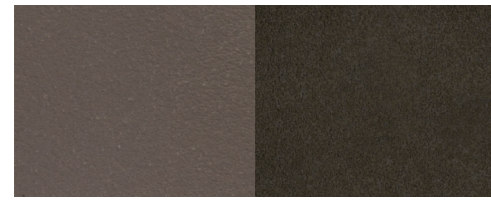
F83 stone + A37 light grey



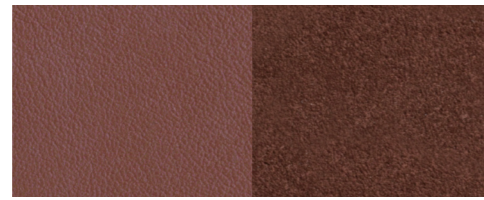
F42 cappuccino + A42 cappuccino



F21 mud + A69 sage



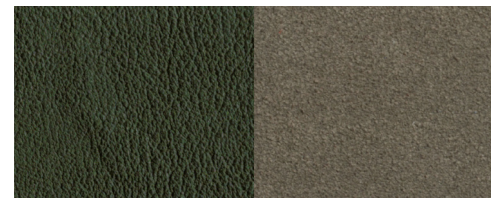
F24 smoke + A80 musk



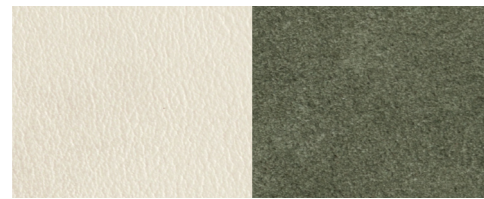
F65 antique rose + A82 rust



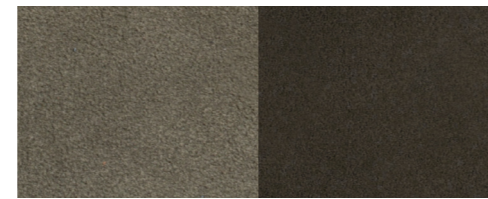
F91 nude + A91 nude



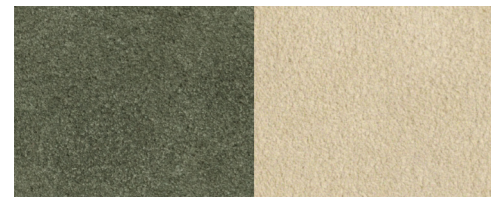
F02 loden green + A69 sage



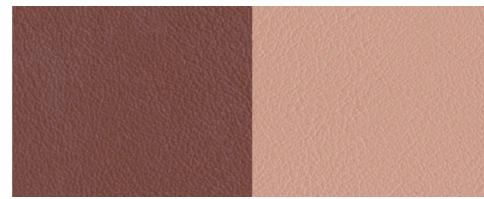
F95 off white + A02 loden green



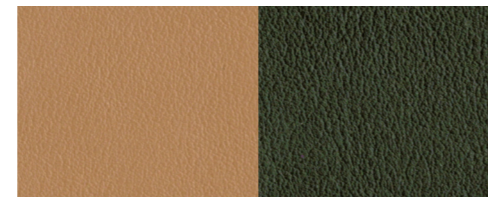
A69 sage + A80 musk



A02 loden green + A06 ivory



F65 antique rose + A91 nude



F42 cappuccino + F02 loden green

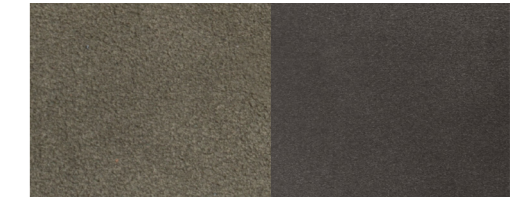
## THE DESIGNER'S LACQUER &amp; LEATHER RECOMMENDED COMBINATIONS



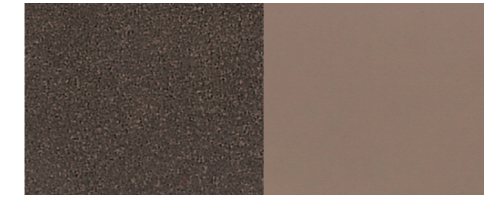
A42 cappuccino + cappuccino lacquer



A37 light grey + light grey lacquer



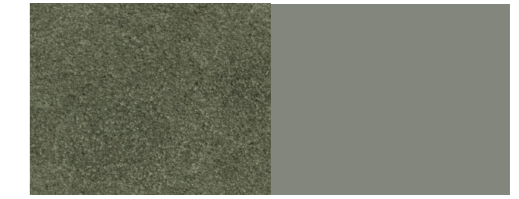
A69 sage + bronze lacquer



A21 mud + mud lacquer



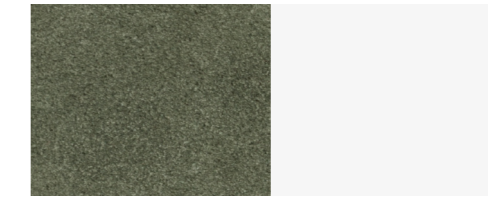
A05 white + white lacquer



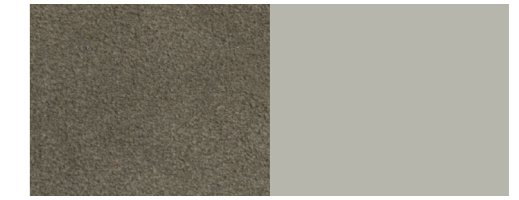
A02 loden green + RAL 7033 cement grey



A80 musk + RAL 9003 signal white lacquer



A02 loden green + RAL 9016 traffic white lacquer



A69 sage + RAL 7044 silk grey lacquer

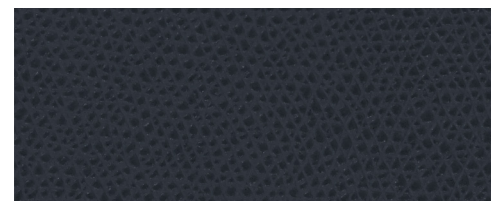


A80 musk + RAL 7002 olive grey lacquer

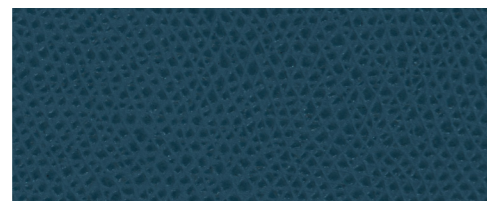


G — PRINTED CALFSKIN GOLF  
price category: A

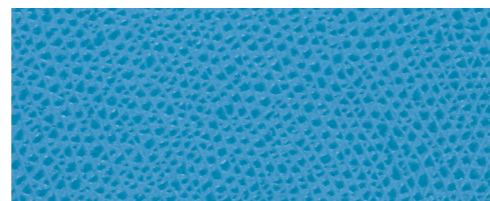
tanned in Italy • origin: Northern Europe • price category: A  
waterproof, scratchproof



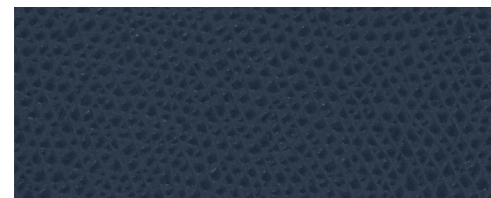
G33 • ocean



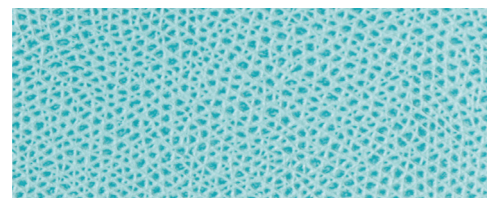
G31 • petrol blue



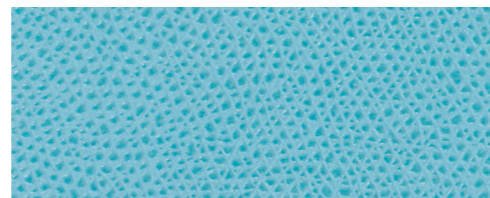
G22 • turquoise



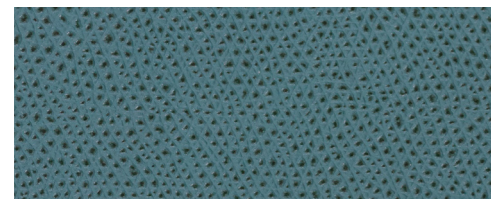
G12 • royal blue



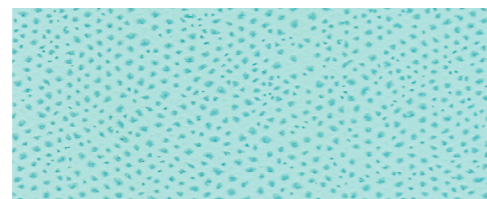
G60 • capri



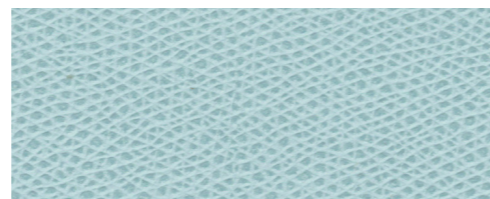
G99 • tropical blue



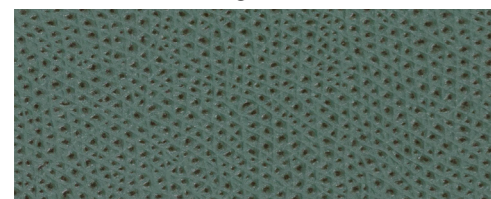
G113 • guatemala



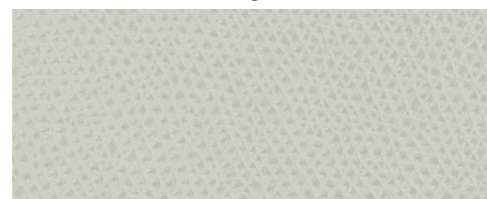
G10 • light blue



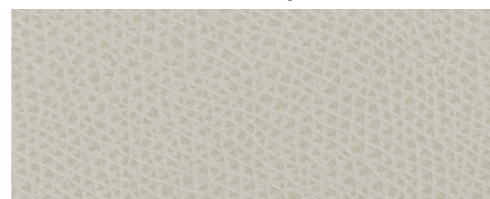
G66 • sky



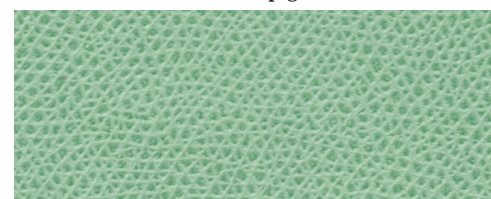
G151 • deep green



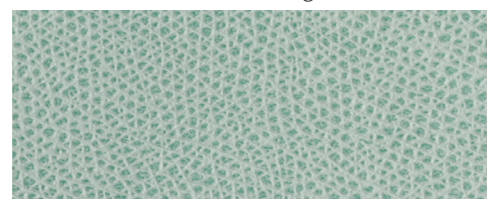
G109 • celadon green



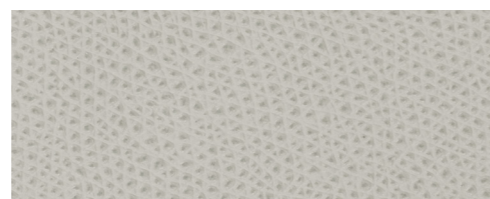
G176 • ammonite



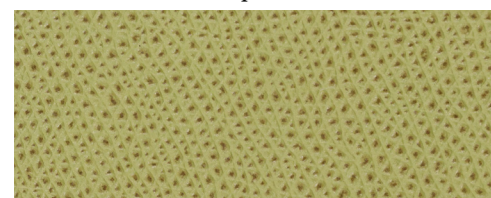
G43 • pistachio



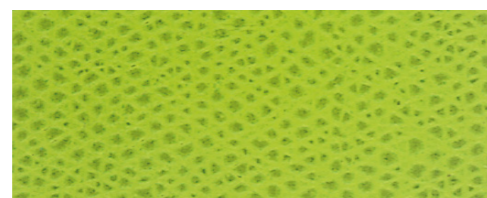
G46 • mint



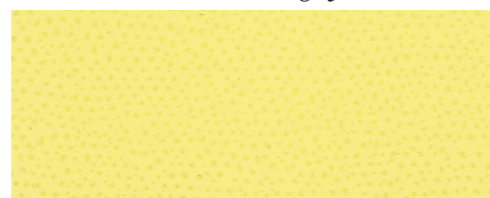
G144 • laurel grey



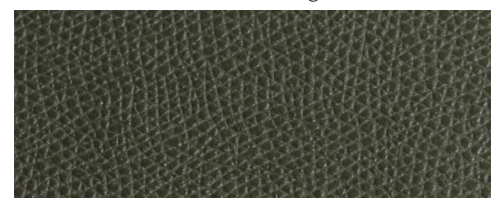
G154 • meadow green



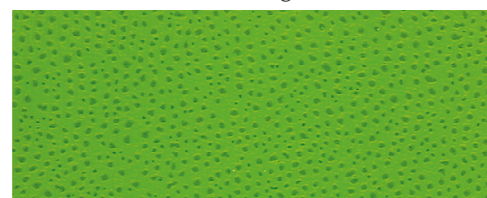
G01 • acid green



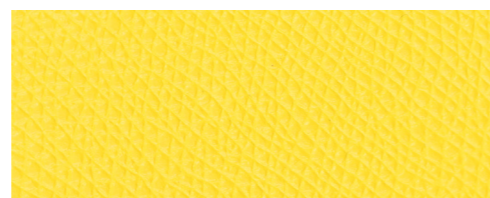
G27 • lemon



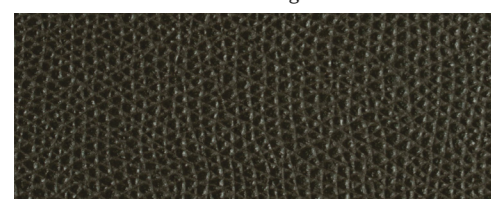
G02 • loden green



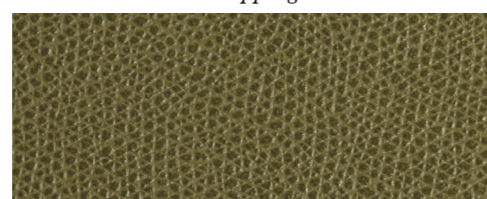
G26 • apple green



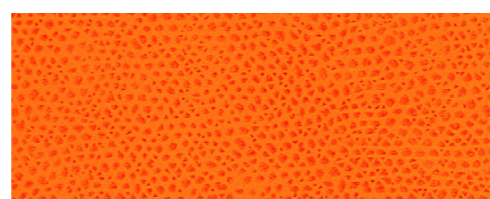
G70 • mimosa



G57 • cipress



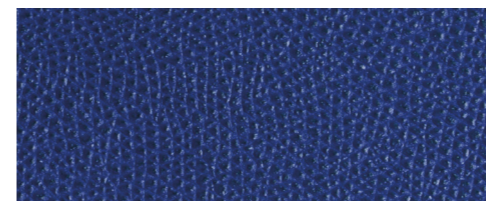
G98 • olive green



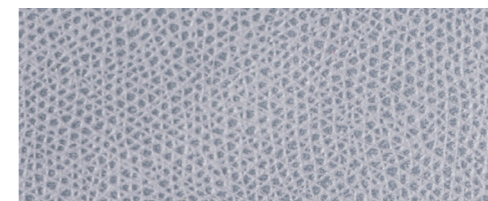
G04 • orange

G — PRINTED CALFSKIN GOLF  
price category: A

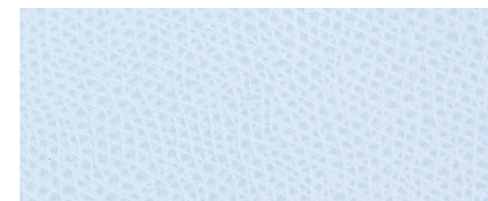
tanned in Italy • origin: Northern Europe • price category: A  
waterproof, scratchproof



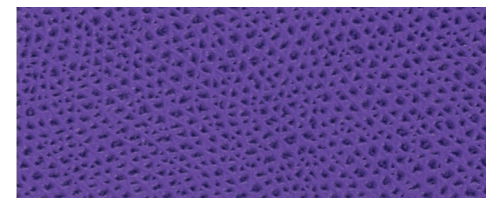
G32 • ultramarine



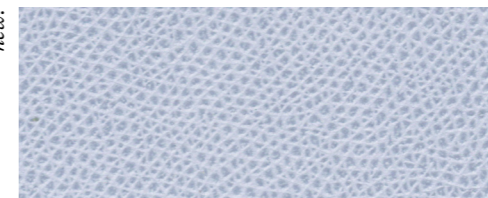
G41 • storm grey



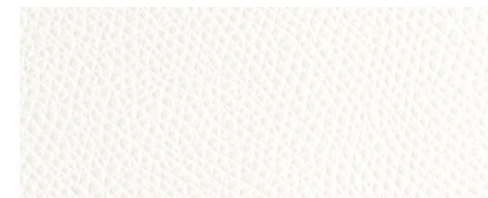
G106 • spun sugar



G147 • iris purple



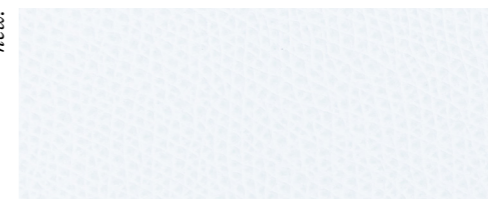
G29 • lilac grey



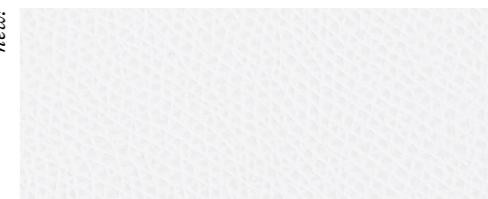
G95 • off white



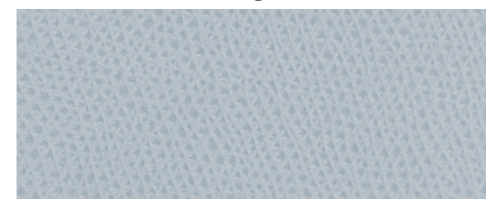
G100 • peacock



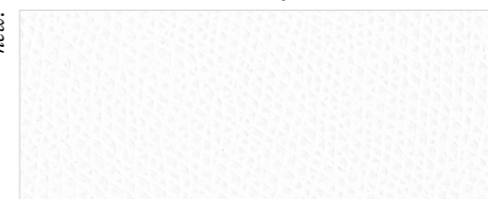
G114 • seafoam



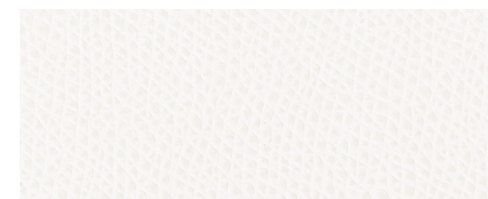
G120 • cool white



G94 • azure



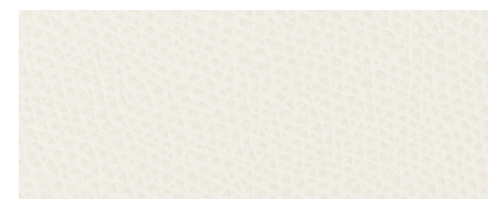
G05 • white



G119 • marshmallow



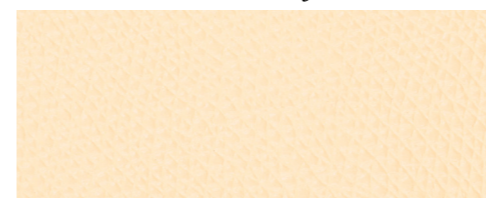
G06 • ivory



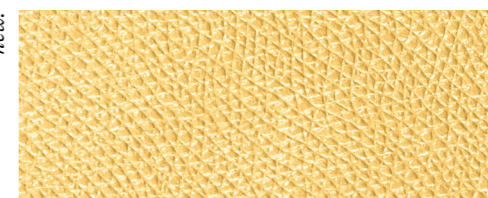
G116 • almond



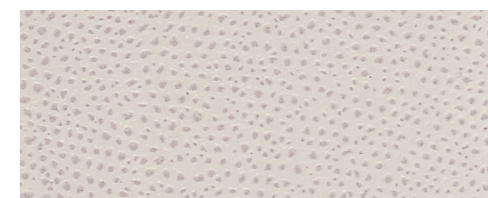
G49 • ice



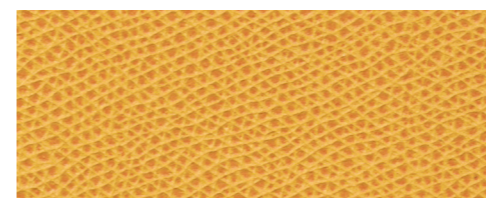
G110 • vanilla



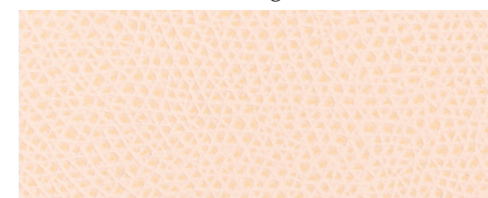
G50 • gold



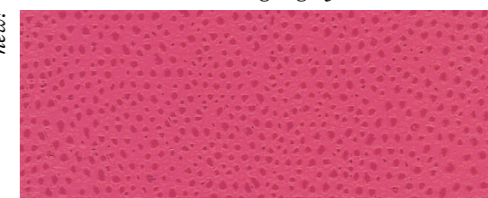
G37 • light grey



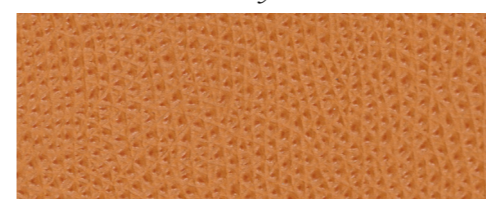
G03 • yellow



G139 • cornhusk



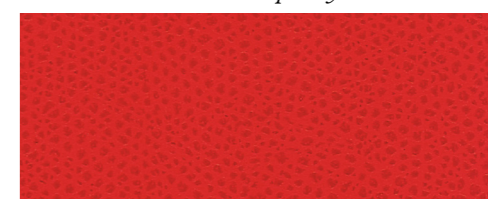
G35 • raspberry



G132 • pumpkin



G38 • mango

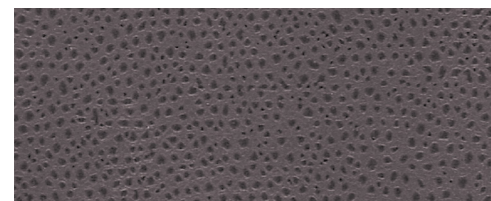


G23 • coral

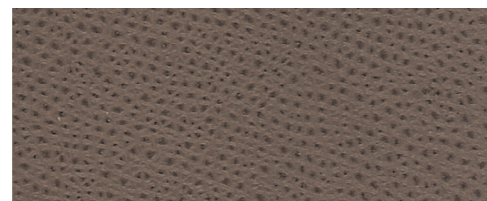


G — PRINTED CALFSKIN GOLF  
price category: A

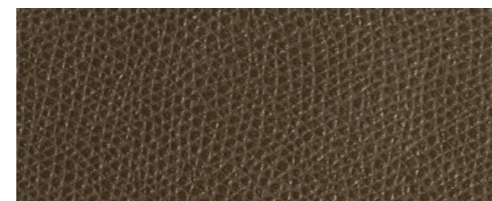
tanned in Italy • origin: Northern Europe • price category: A  
waterproof, scratchproof



G19 • graphite



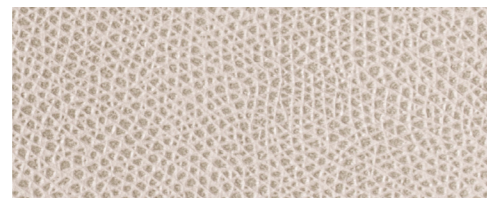
G24 • smoke



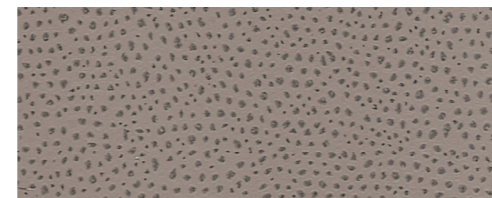
G96 • clay



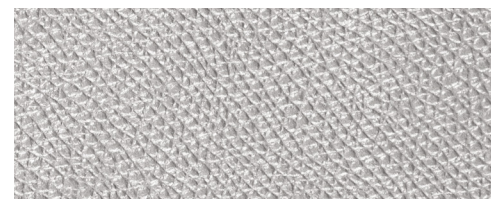
G18 • grey



G83 • stone



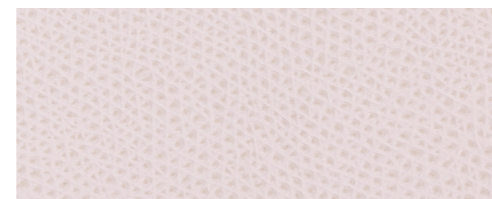
G21 • mud



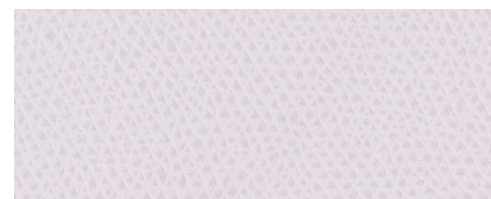
G52 • silver



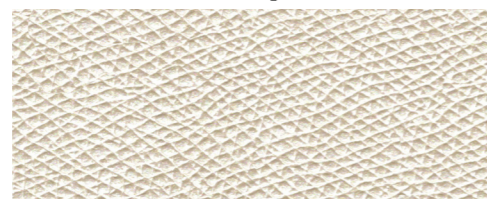
G28 • cipria



G143 • rosebud



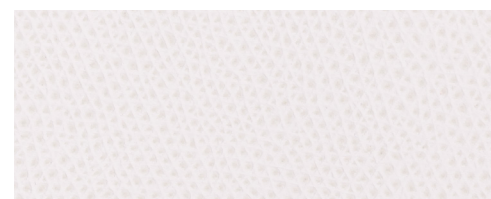
G137 • orchid ice



G61 • pearl



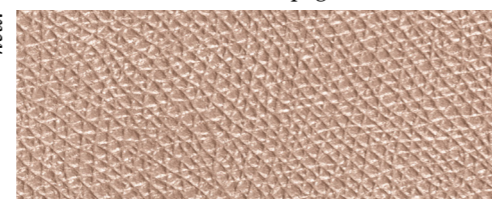
G123 • champagne



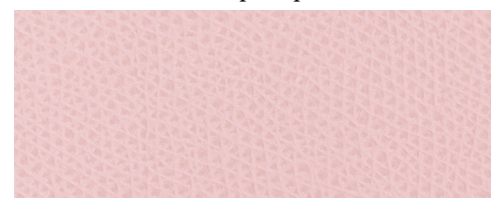
G167 • petal pink



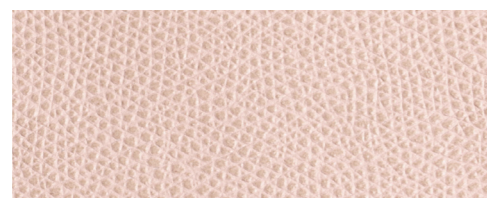
G193 • stardust



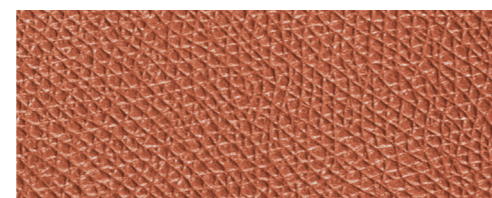
G63 • moonsand



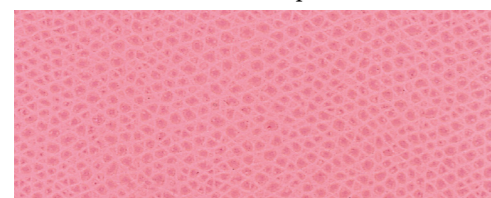
G187 • blush pink



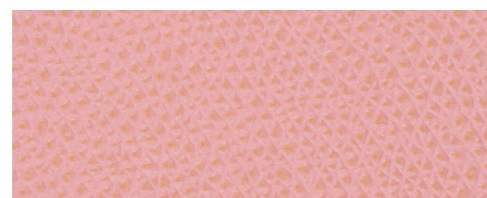
G91 • nude



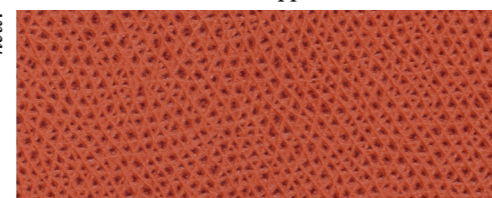
G54 • copper



G34 • pink



G127 • flamingo



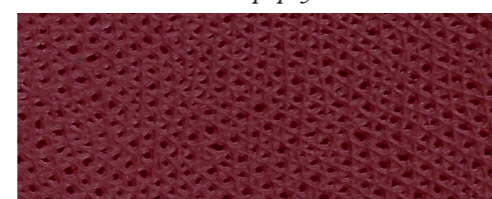
G62 • papaya



G48 • scarlet



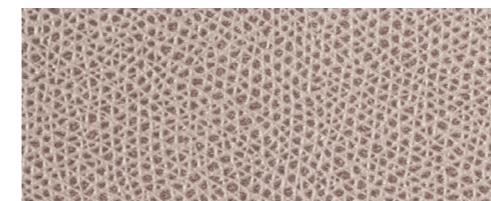
G13 • red



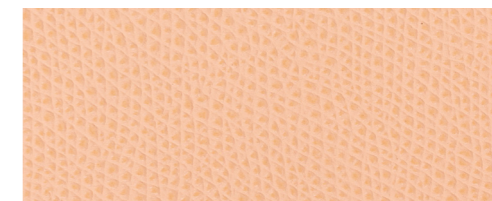
G72 • cherry

G — PRINTED CALFSKIN GOLF  
price category: A

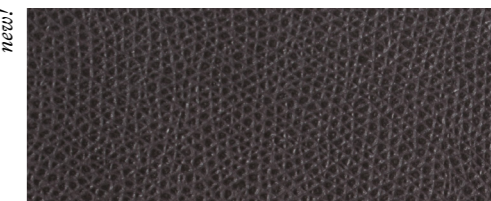
tanned in Italy • origin: Northern Europe • price category: A  
waterproof, scratchproof



G45 • dove



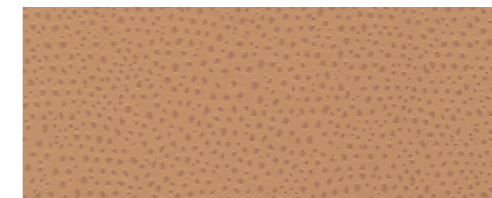
G164 • peach



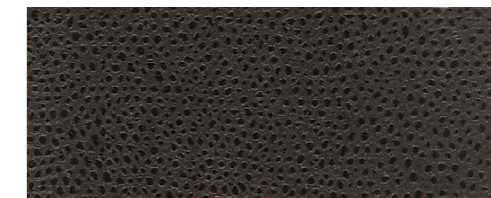
G67 • lava



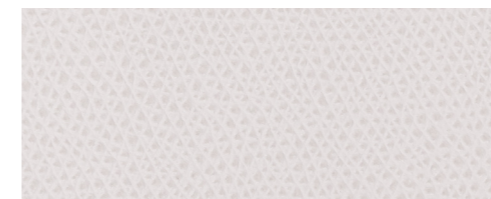
G76 • mustard



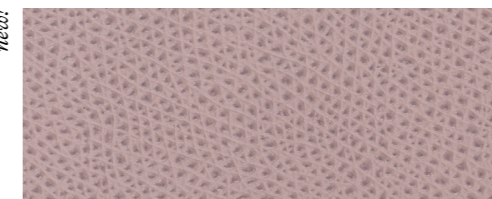
G07 • sand



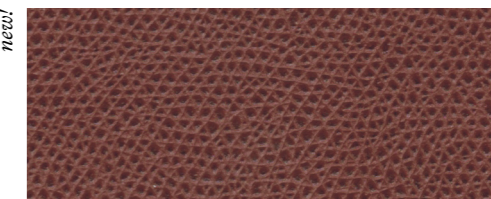
G25 • moka



G102 • dust



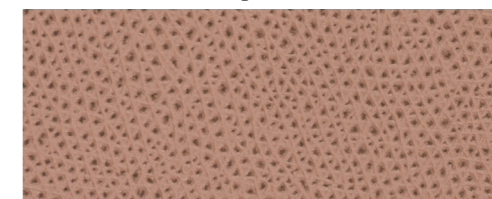
G122 • pale mauve



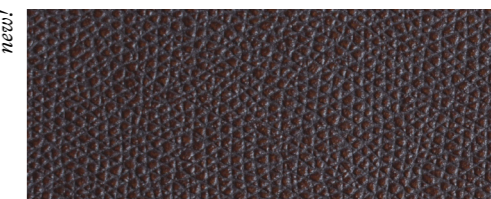
G82 • rust



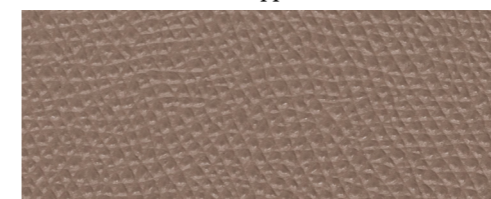
G42 • cappuccino



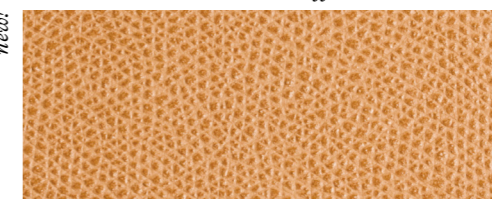
G159 • iced coffee



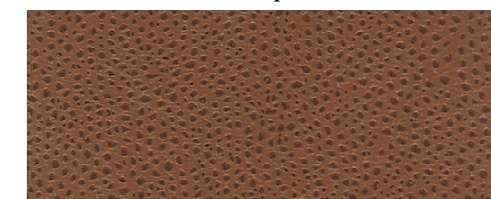
G93 • plum



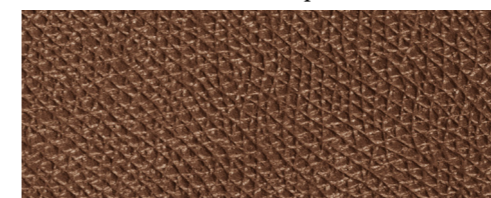
G105 • taupe



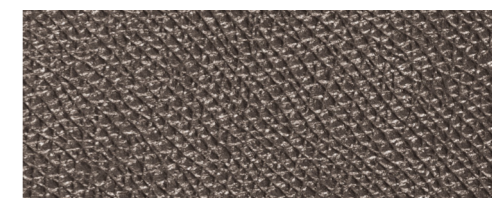
G51 • caramel



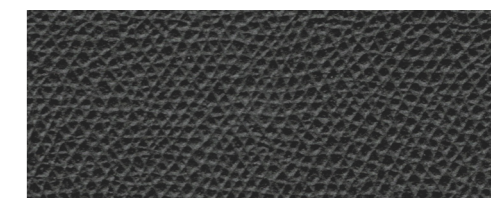
G30 • tobacco



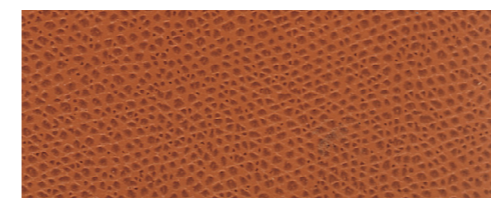
G56 • bronze



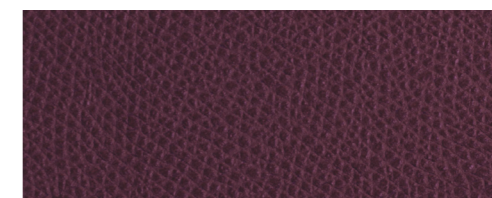
G58 • titanium



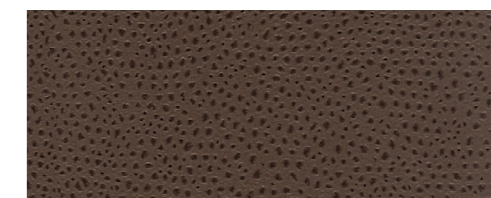
G77 • slate



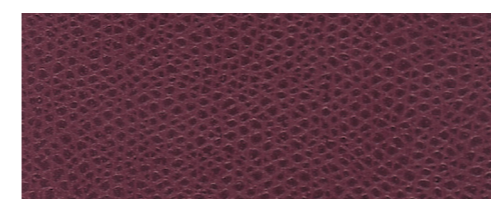
G08 • siena



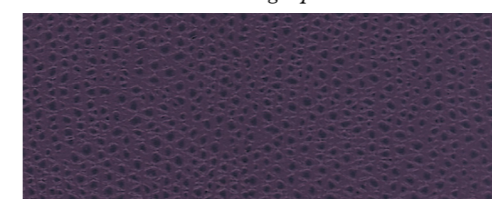
G36 • grape



G09 • brown



G17 • bordeaux



G16 • violet

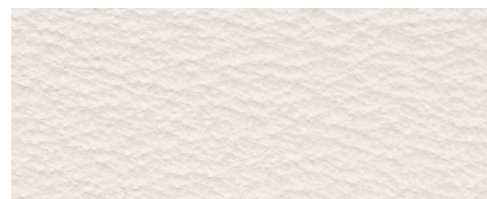
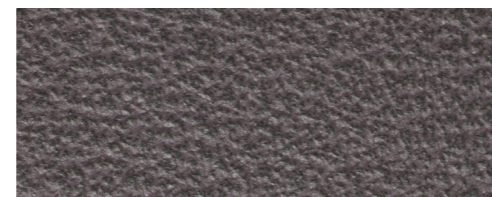
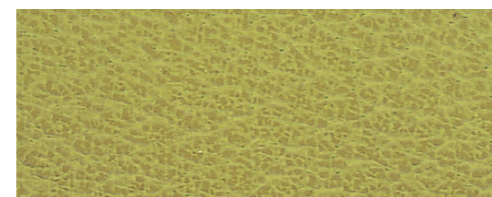
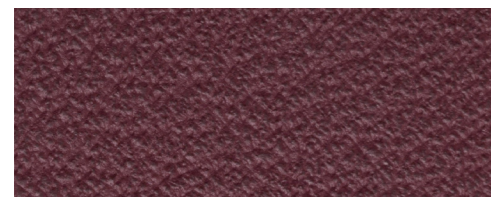
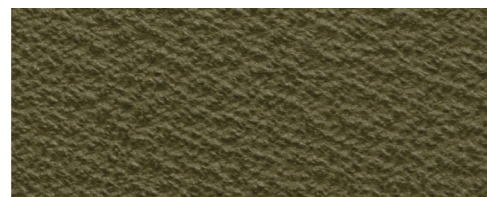
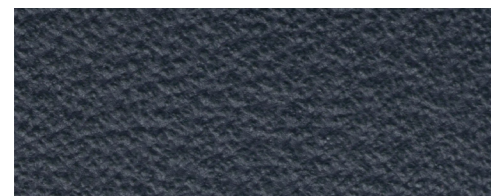
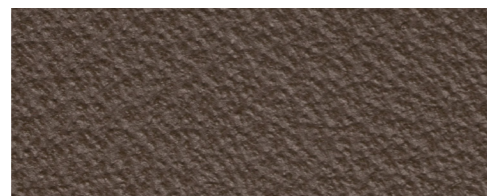
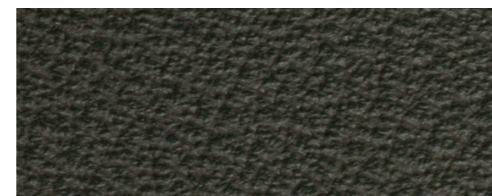
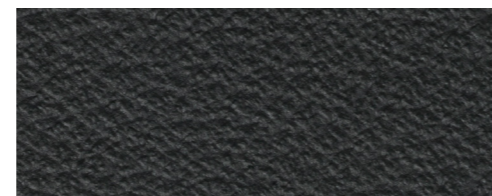


G20 • black



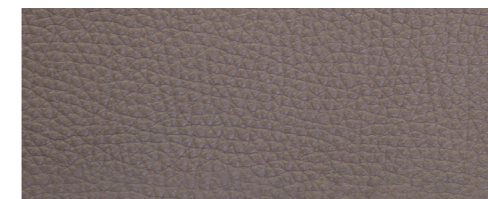
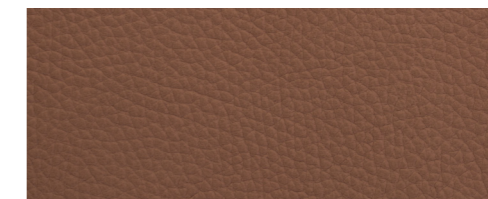
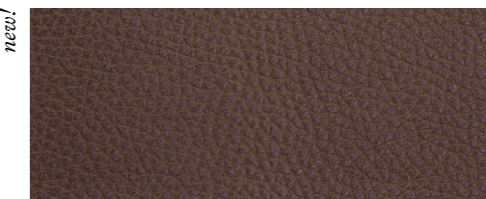
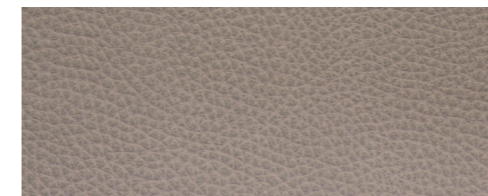
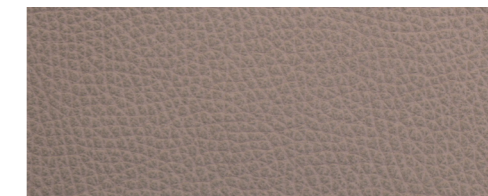
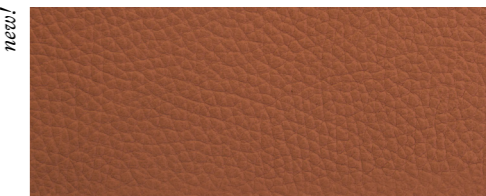
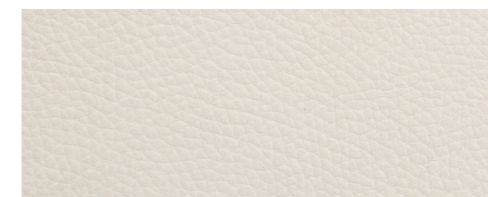
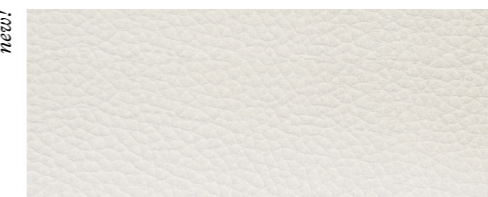
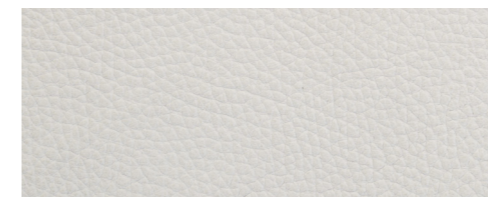
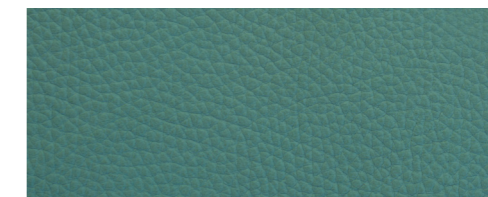
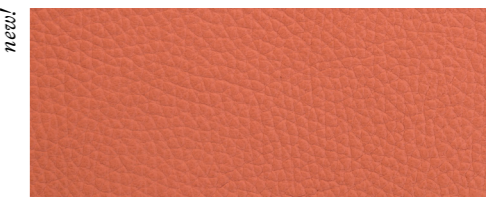
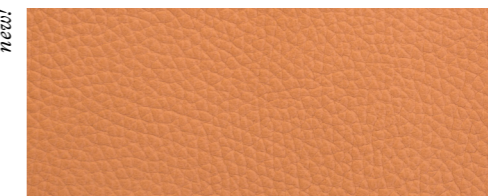
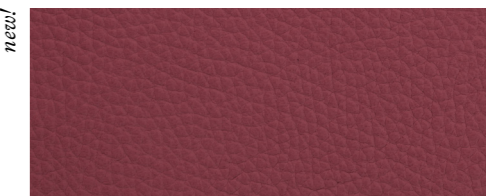
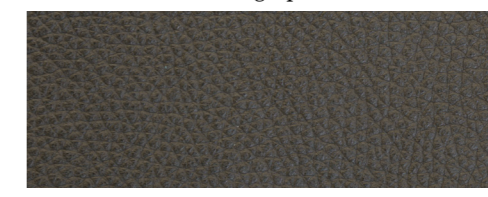
## B — PRINTED CALFSKIN WILD BOAR

tanned in Italy • origin: Northern Europe • price category: A  
waterproof, scratchproof

B49 • *ice*B95 • *off white*B42 • *cappuccino*B37 • *light grey*B76 • *mustard*B21 • *mud*B83 • *stone*B51 • *caramel*B67 • *lava*B41 • *storm grey*B59 • *garnet*B01 • *acid green*B17 • *bordeaux*B98 • *olive green*B38 • *mango*B33 • *ocean*B96 • *clay*B57 • *cipress*B20 • *black*B09 • *brown*B77 • *slate*

## H — PRINTED CALFSKIN DEER

tanned in Italy • origin: Northern Europe • price category: A  
water-resistant and slightly resistant to scratches

H24 • *smoke*H30 • *tobacco*H25 • *moka*H21 • *mud*H105 • *taupe*H08 • *siena*H83 • *stone*H76 • *mustard*H42 • *cappuccino*H06 • *ivory*H95 • *off white*H91 • *nude*H37 • *light grey*H113 • *guatemala*H62 • *papaya*H94 • *azure*H132 • *pumpkin*H17 • *bordeaux*H12 • *royal blue*H19 • *graphite*H67 • *lava*H20 • *black*H57 • *cipress*H93 • *plum*



LACQUERED WOOD FINISHES

you can choose among 7 different finishes or ask us for other option



WHITE



OFF WHITE



LIGHT GREY



CAPPUCCINO



SAGE



MUD



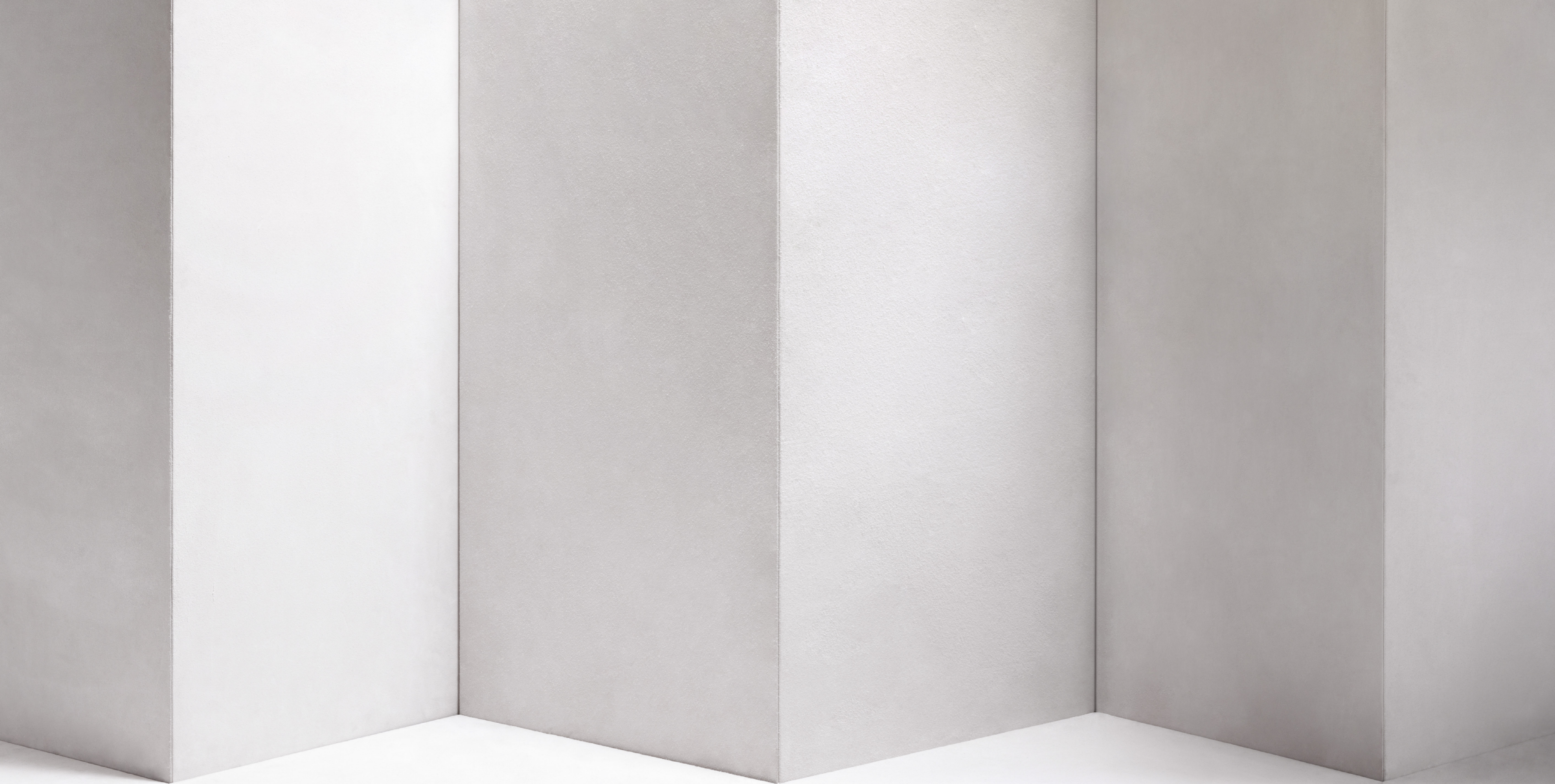
BRONZE

new!

new!

OTHER  
FINISHES





*graphic design*  
Giobagnara studio


*photography*  
Giobagnara studio



# GIOBAGNARA

[www.giobagnara.com](http://www.giobagnara.com)  
[info@giobagnara.com](mailto:info@giobagnara.com)

*Follow us on:*

 @giobagnara  
#giobagnara

 GIOBAGNARA

*manufacture /  
headquarters*

via Vivaldi, 12  
16126 Genova — Italy  
ph. +39 010 2518989

*showroom*

via Garibaldi, 12  
16124 Genova — Italy  
ph. +39 010 25 30 365

*flagship stores*

Calle delle Ostreghe, 2456 – 2459  
30124 Venice — Italy  
ph. +39 041 5231148

Calle Vallarosso, 1318  
30124 Venice — Italy  
ph. +39 041 2687182

Piazza San Marco, 60 – 61  
30124 Venice — Italy  
ph. +39 041 9348009

Piazza San Marco, 289 – 305  
30124 Venice — Italy  
ph. +39 041 3073962

Piazza San Marco, 313 – 314  
30124 Venice — Italy  
ph. +39 041 9349548

Westerweg, 12  
25999 Kampen, Sylt — Germany  
ph. +49 (0)4651 9677530

*shop in shop*

KaDeWe  
Taentzienstrasse 21 - 24  
10789 Berlin — Germany  
5th floor, corner S.A5.01

*press contact*

LFO\_ Liza Fitoussi Office  
[contact@agencelfo.com](mailto:contact@agencelfo.com)  
+33 (0)148 781528

All designs are registered.